

\$1700.00 / Monthly - 323 OUELLETTE

Listing ID: 1710491

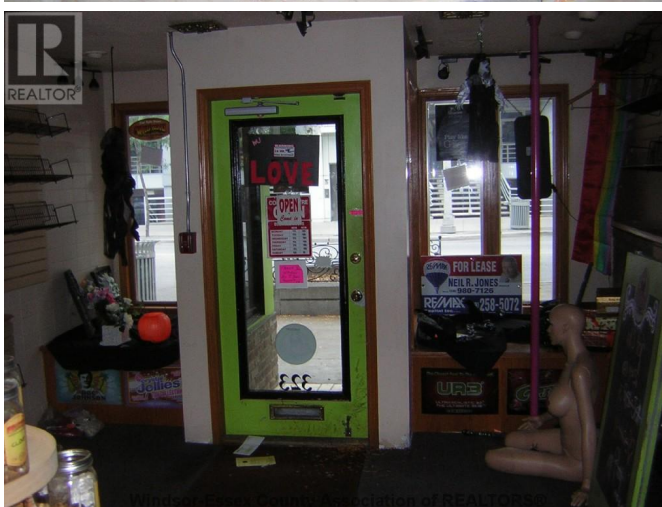
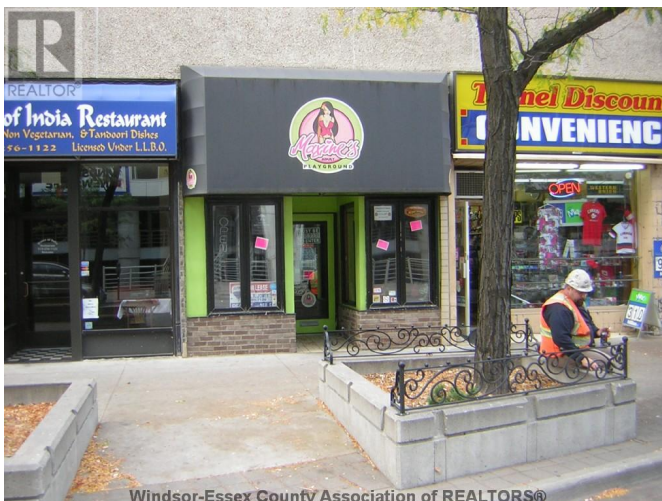
\$1700.00 / Monthly

, 1200 square feet

Retail

323 OUELLETTE, WINDSOR, Ontario,
N9A4J1

DOWNTOWN WINDSOR WHERE ALL THE ACTION IS. SITUATED IN THE RIGHT BLOCK ON THE CORRECT SIDE OF OUELLETTE AVE (WEST SIDE) SITS THIS 1200 SQ FT STOREFRONT READY FOR IMMEDIATE POSSESSION. WHAT A GREAT LOCATION FOR A SANDWICH SHOP, RETAIL OUTLET, SHOE STORE, MEN'S OR LADIES STORE THAT IS BADLY NEEDED DOWNTOWN, OR ANY OTHER STYLISH BOUTIQUE OPERATION. RENT IS ALL INCL EXCEPT TENANT PAYS ELECTRICITY ONLY. (id:7952)



MLS®, REALTOR®, and the associated logos are trademarks of The Canadian Real Estate Association

Data Provided by: Windsor-Essex County Association of REALTORS®

Last Modified: 30/10/2017 01:26:46 PM

Listing Office:RE/MAX CAPITAL INC. - 820